

**210-3**

Angela Wolf shares her couture details for the perfect two piece sleeve.



Please continue to page 2 for project instructions.

## Partners



<http://www.brothersews.com> <http://www.voguefabricsstore.com>

# Sewing the 2-Piece Sleeve with Wool

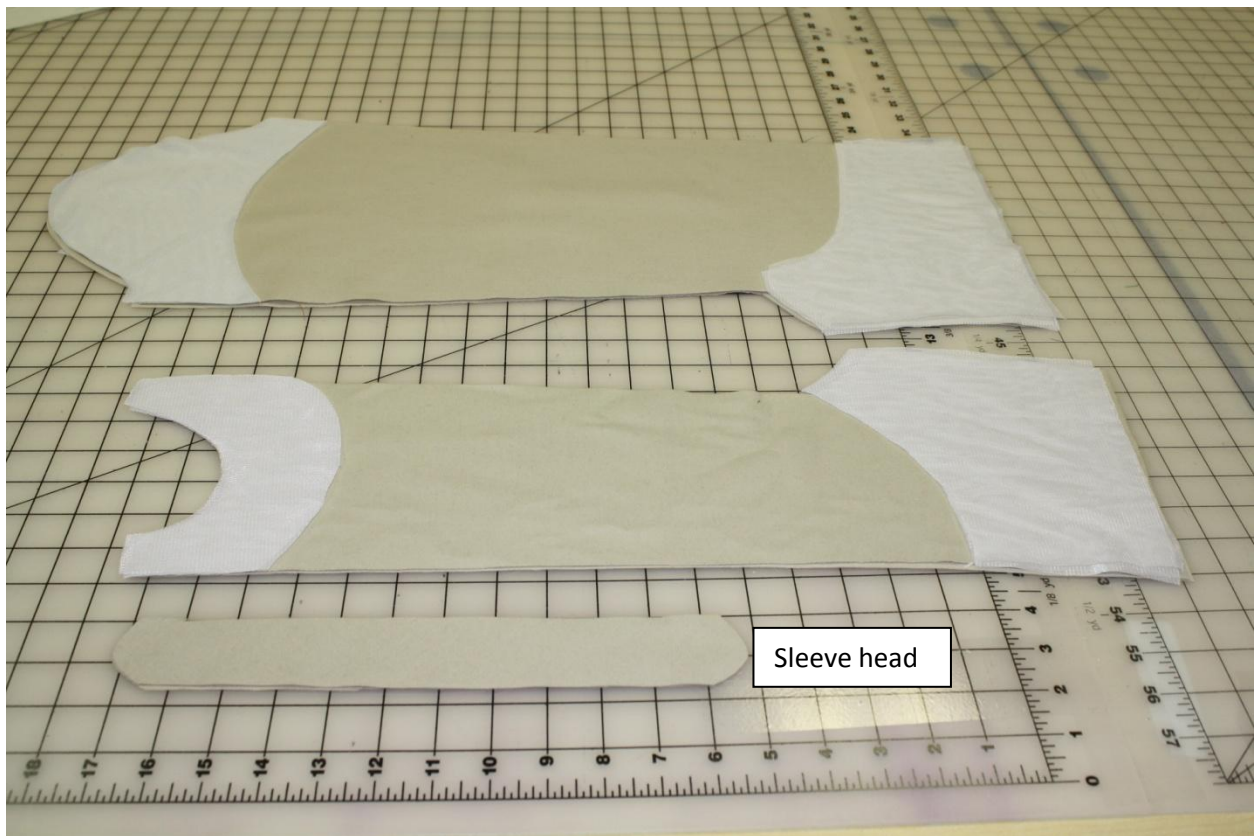
by Angela Wolf

www.AngelaWolf.com and [www.AngelaWolfPatterns.com](http://www.AngelaWolfPatterns.com)

Join Angela on [facebook](#), [twitter](#), and [blog](#)

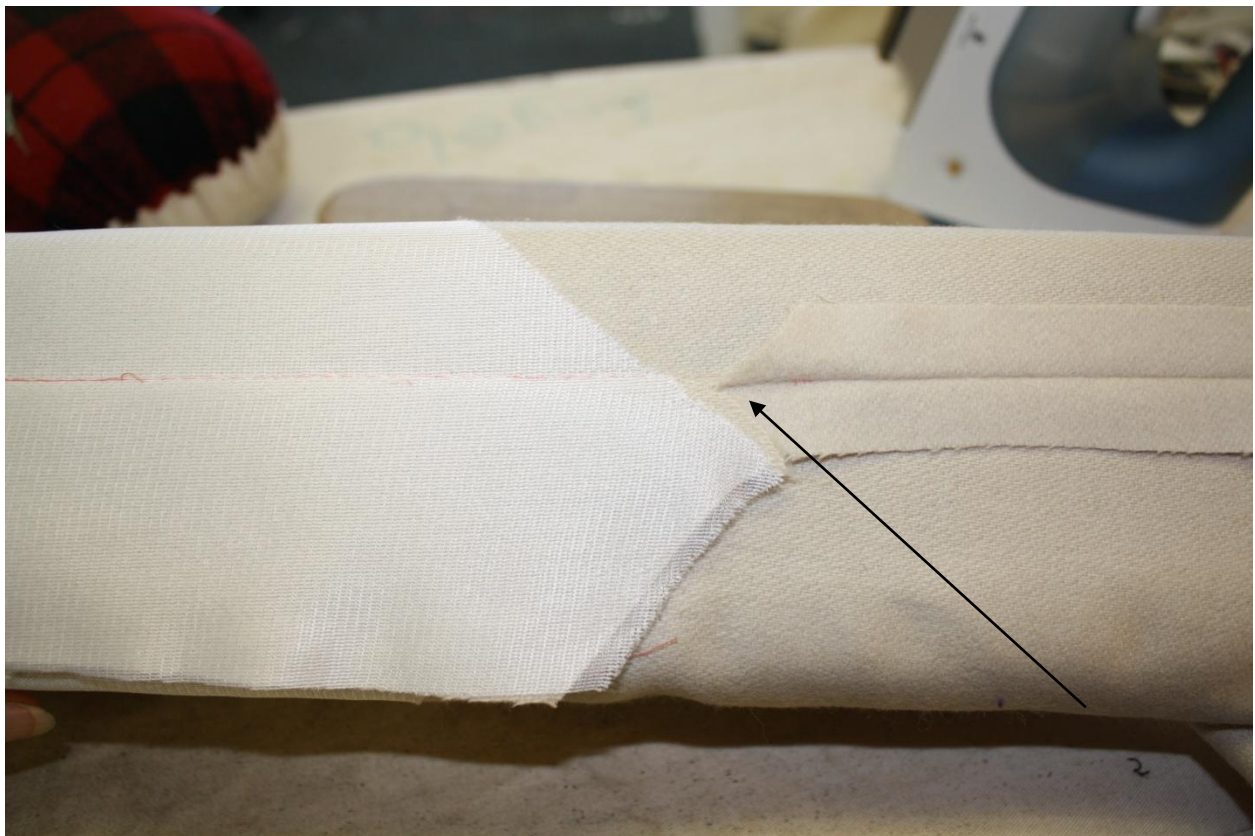
**Fabric:** All of the fabric used in this tutorial is from [Vogue Fabrics](#)

- Cut both pattern pieces, making sure to match the grain lines together.
- If there is a nap on the fabric, make sure the nap faces down.



- Check a small sample of fabric to see if fusible interfacing will work. If it shows through to the other side, you will need to use sew-in interfacing.

- You will need interfacing at the hem and sleeve vent on the top sleeve head and the underarm.
- Press the interfacing using lots of steam.
- Sew your sleeve together, matching up your notches.
- Sew down to the tip of your vent, backstitch, and then baste to the edge of the fabric.
- Press all of the seams open.



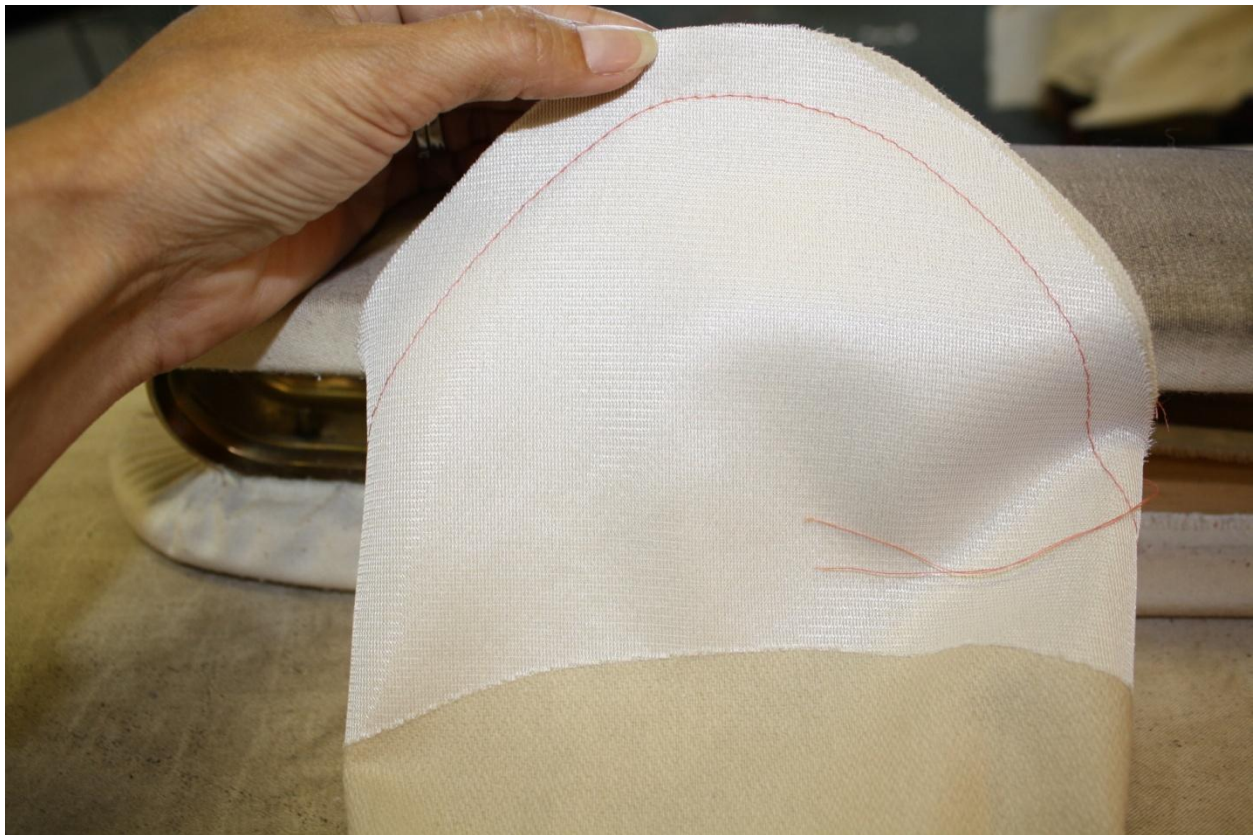
- When you get down to the vent, press the vent one way.
- Make a small snip in the fabric.





- Starting at the snip, sew the rest of the vent as shown.
- Remove basting stitches on your vent.

### **Sleeve Head:**



- Run basting stitches along the seam allowance of your upper sleeve.
- Pull basting stitches together, creating a cap.



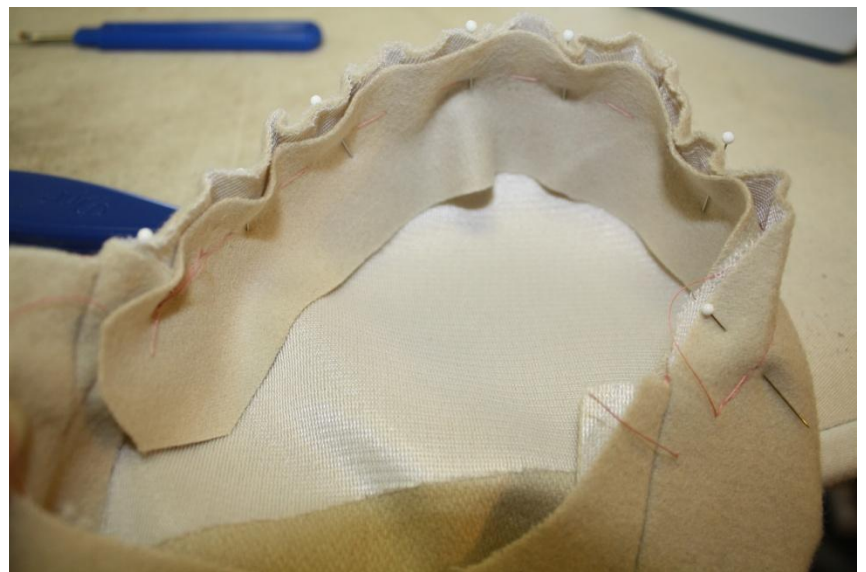
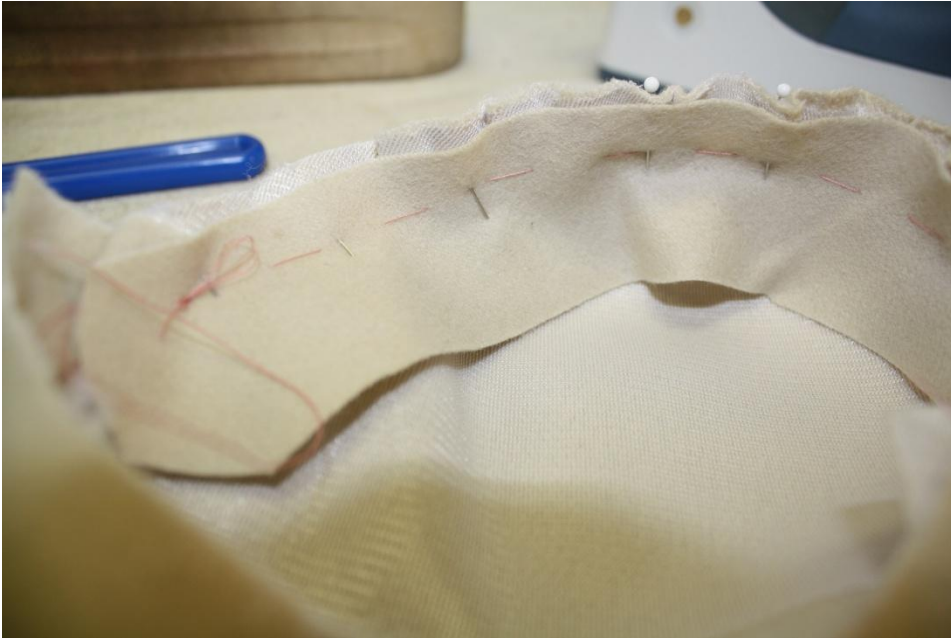
- Place sleeve onto ham and press with a lot of steam. (Note: Since we are using wool, you can use a lot of steam to shrink up the sleeve head.)
- Continue to steam and press to shrink up fabric until you have a nice curve.



- You will need to measure around the top of your sleeve.
- Cut a bias strip of fabric 2 inches wide by the length of your sleeve cap.
- Pin bias strip to the sleeve, stretching as you pin.
- Hand stitch in place (Note: depending on the fabric you are using, you may have to sew the sleeve head after you have sewn the sleeve to the jacket.)

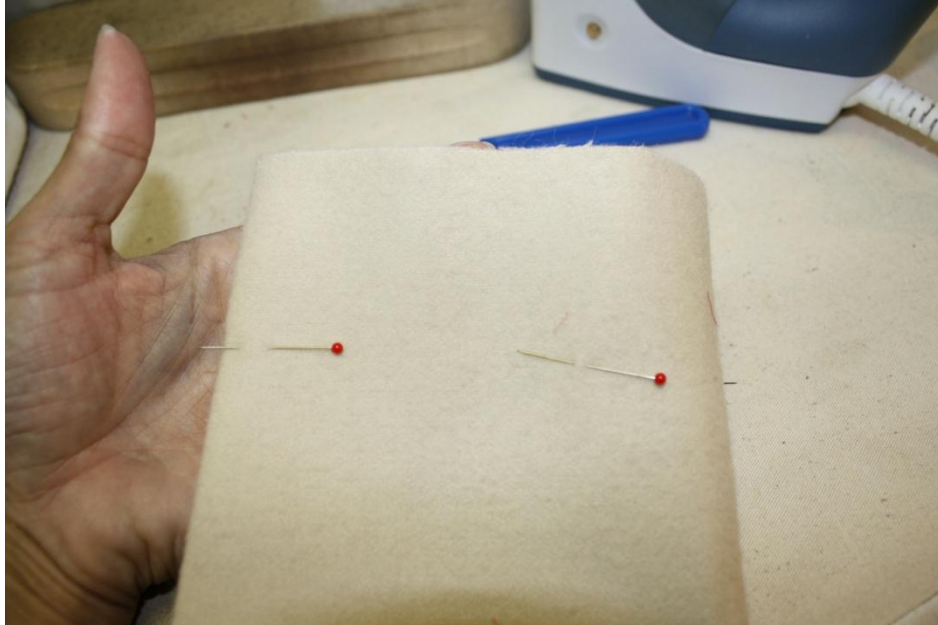


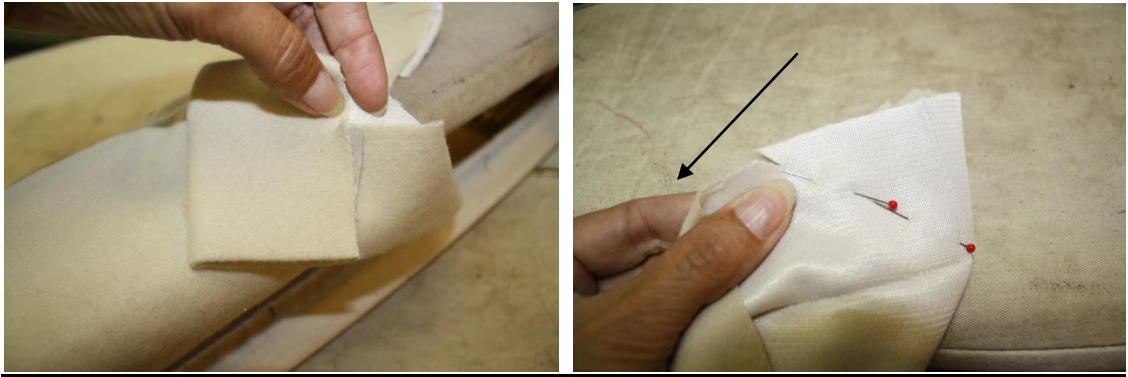
(Note: The goal of the sleeve head is to fill the upper part of the sleeve so it lays nicely against your arm.)



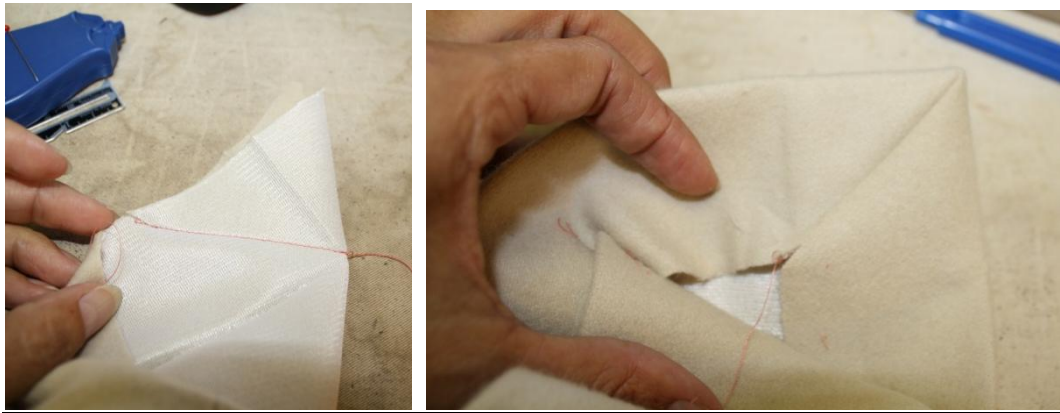
## Hemming the 2-Piece Sleeve with Wool

- Note: Do not hem your sleeve until it is attached to the jacket.
- Mark your hem with pins or chalk and press up, creating a crisp hem.
- Place the sleeve on a sleeve-board, making sure the edges of the vent match up and press.





- Beginning with the top vent, create a small snip in the fabric where the ends meet, as shown in the picture.
- With right sides together, turn sleeve hems out, matching snips.
- Pin a line from the snips to the corner. Stitch. Turn back and press.



- No go the under vent. Place a pin at the pressed hem edge.

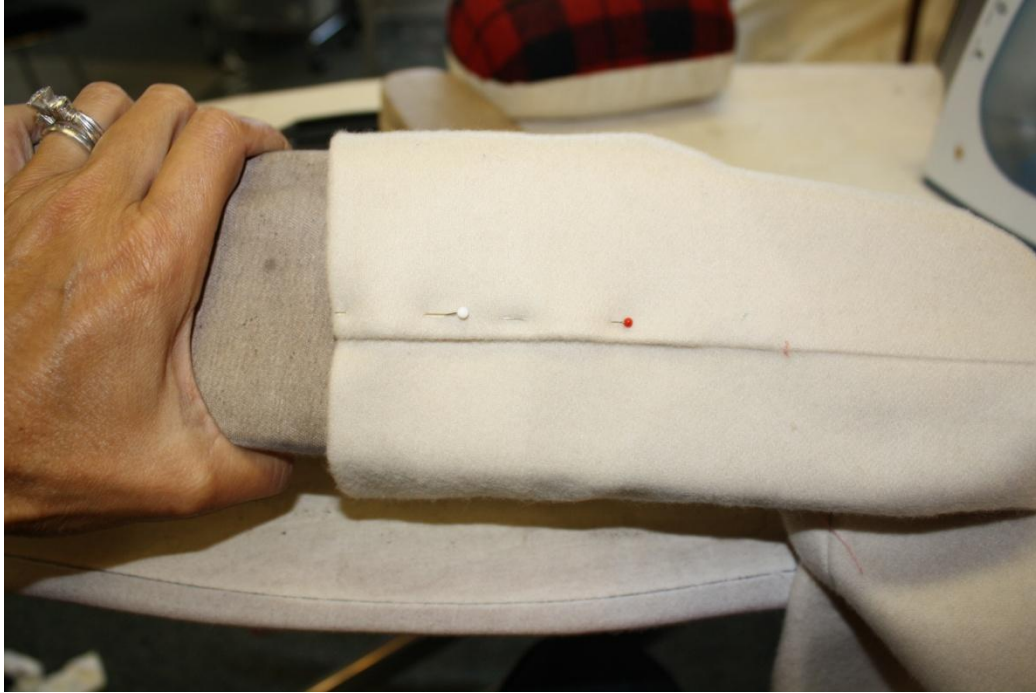






- Take underside of vent and flip right sides together.
- Stitch 1/4" from the edge of the fabric.
- Turn fabric right side out and press.





- Turn sleeve inside out.
- Press.
- Continue stitching vent closed, as shown.



✂



Photographer: Gregg Rizzo Model: Amy Marohn Hair/Makeup: Shawn Frandsen and Sara Schilling

from the Angela Wolf Collection

<http://angelawolf.com/>



