

Are you ready? Let's go sew!

www.letsdosew.com

Safari Jacket with Cargo Pockets

Presented by: Joanne Banko on [It's Sew Easy TV](#)



This safari style jacket was created using Folkwear pattern #130 – The Australian Bush Outfit. The pattern includes authentic pockets but I opted to modify the pattern style by creating two of my own special cargo pockets. Whether you're traveling near or far you can never have too many pockets! These pockets are expandable. They're ideal for carrying essentials close at hand and afford an extra measure of security. This versatile style will take you everywhere! This jacket is multi-sized for both men and women. You can make it in a variety of different fabrics. I chose a washable, woven silk fabric called Burma silk. Follow along and learn how to make two styles of expandable cargo pockets for your own version of this safari style jacket.

Materials and Supplies featured in this episode

- [Brother XV8500D Sewing and Embroidery Machine](#)
- [Coats Dual Duty XP](#) to match fabric
- Sharp Jeans needle or Microtex needle and basic sewing notions for garment construction and topstitching.
- Blouse/shirt weight to medium weight fabric is best for the featured cargo pockets. Lightweight woven fabric is recommended for lining pocket style#2. If your fabric is blouse/shirt weight you can use the self same fabric for lining.
- [Folkwear 130 Australian Bush Outfit](#) – This pattern is ideal for creating this garment with the cargo pockets. However, you can consider adding these pockets to many other garments, plus totes and other travel bags. I used the upper pocket pattern piece (F) and flap pattern pieces (G & H) included in this pattern, modifying them slightly to fit my pocket sizes.
- Original PDF pattern for pocket style #2, included with these instructions. Print Cargo Pocket2_Top.pdf and Cargo Pocket2_Bottom.pdf, printing on 8.5 X 11 paper, (Use print to fit for a pattern measuring approximately 10" wide X 10" high.)

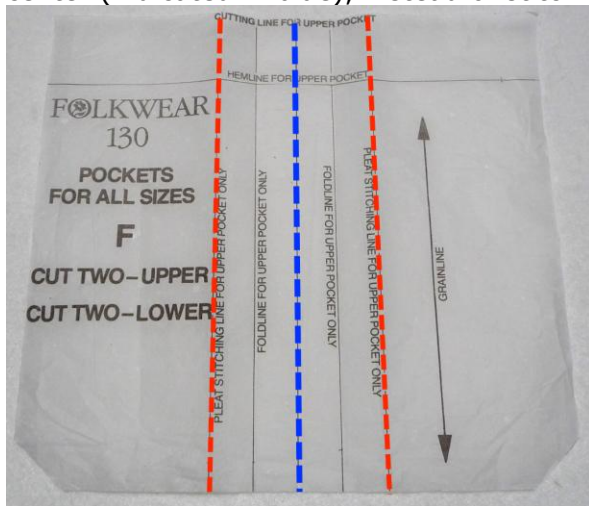
Note: Finished cargo pocket style #2: Approximately 7-inches long X 6-inches wide.

Steps for Creating Cargo Pockets:

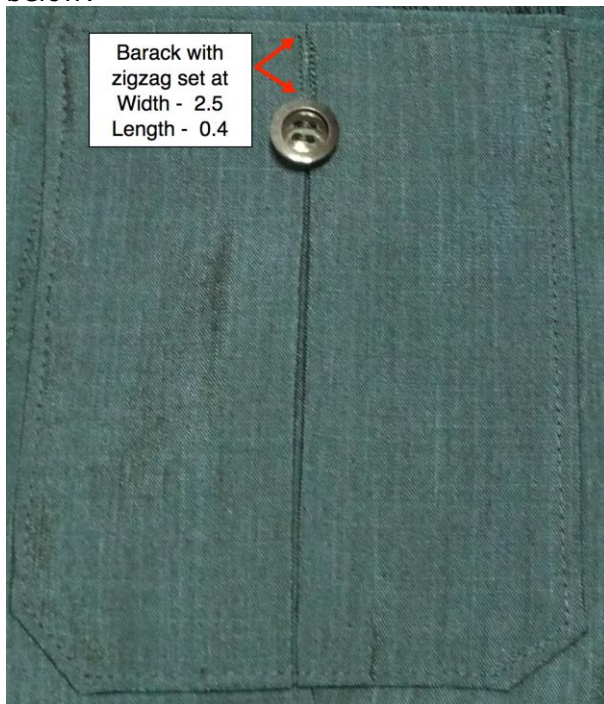
1. If you are making the jacket from Folkwear #130 you can follow all of the general instructions, substituting pocket style #1 and #2 as desired, for the standard pockets included with the pattern.

Construct pocket #1 as follows:

- Cut pocket pieces using pattern (F) and flap (G). **Note:** I modified the flap slightly to make points on the flap less sharp.
- Fold fabric using the lines indicated on pattern (F), folding the pleat lines (indicated in red) to the center (indicated in blue), instead of stitching along the line indicated on the original pattern.

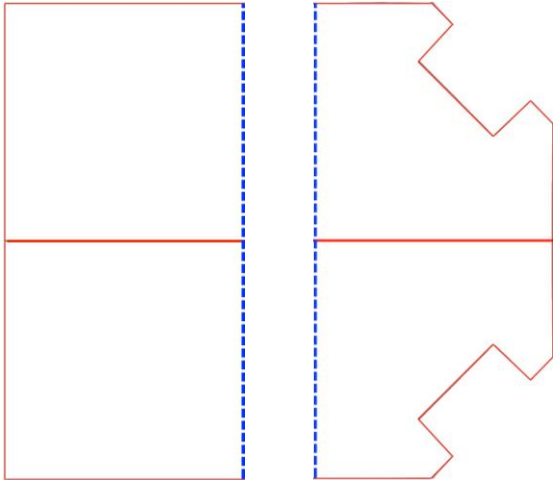


- Finish off raw edges and then fold to the wrong side along top hemline and along remaining edges. Stitch a bar tack using a short narrow zigzag stitch at the top of the pocket to keep the pleat neatly closed. Topstitch pocket and add flap and button closure according to pattern instructions. See below:



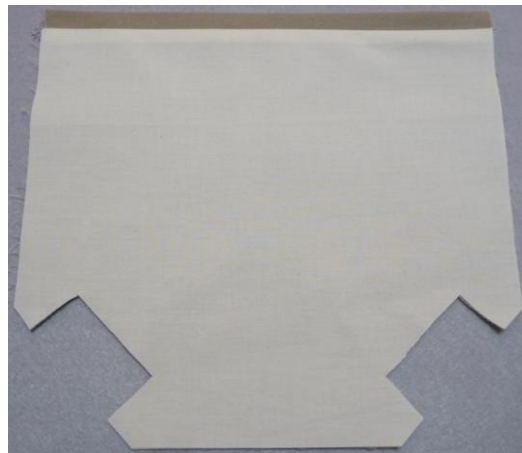
2. Construct pocket #2 as follows:

- Print PDF copies for pocket pattern. Match blue dashed lines and red center lines and tape together to make one full pattern.

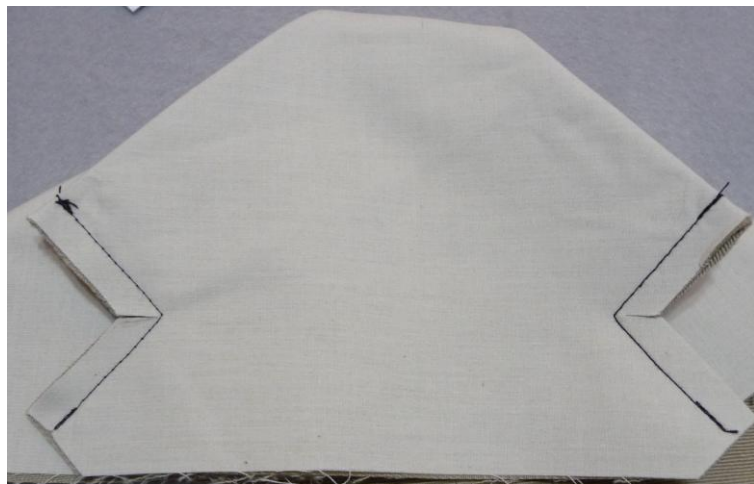
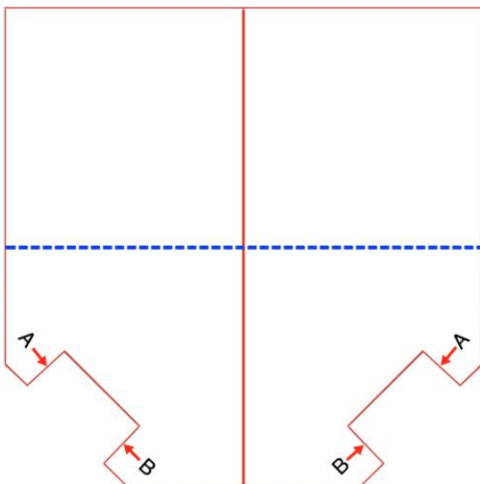


Note: Contrast thread is shown in these examples to better illustrate the steps.

- Cut two pockets from jacket fabric. Cut two lining pieces, trimming 1 ½-inches off the top straight edge of each lining piece.
- Use a ½-inch seam allowance to sew right side of lining to right side of pocket along top straight edge. Flip lining to wrong side of pocket and press, having all raw edges even.



- Next, match raw edge A to raw edge B. Sew along each "V" shaped corner using a ¼-inch seam allowance and a stitch length of 1.8.



- Clip across each corner fold to eliminate bulk.



- Next, press these small seams open and refold pocket so the seams are facing one another and the right side of the pocket is facing up. Push out pointed corners at the bottom of the pocket.
- Press raw edges under ½-inch, forming square corners. Next, carefully press the pocket to form the pleated, layered sides, taking care to make sure pocket is square and even. See wrong side of folded pocket below:



- Position pocket on jacket and pin in place. Pull back the top pleat and topstitch along the folded edge. Finish by anchoring the top edge of the pocket, stitching through all pocket layers. Add flap and button closure according to pattern instructions.



- Add flap and button closure according to pattern instructions. See finished pocket below:



Additional Resources:

- Visit the Brother web site at www.brother-usa.com for additional Free embroidery designs, project instructions, tutorials, and more! Sign up for their monthly newsletter and you'll get notifications for special offers, free embroidery designs and other valuable information.
- Visit your local [Brother sewing machine dealer](#) for Brother Machines, Brother software programs, and special machine accessories.
- Visit Folkwear.com for more information about pattern #130 - The Australian Bush Jacket featured in this project.
- Please visit me at my Sewing and Embroidery website, www.letsdosew.com for more tips, techniques, video lessons and free downloads. Sign up for updated sewing ideas and inspiration, project ideas, and more when you visit www.letsdosew.com.
- Find me on Facebook - <https://www.facebook.com/letsdosew/>

Happy Sewing!

Joanne