

Season 1211.3

- Serger Tips – TIPS FOR SERGING INSIDE & OUTSIDE CORNERS

Fabric, Patterns and Sewing Supplies are found on:

[The Angela Wolf Pattern Collection](#)



TIPS FOR SUCCESSFUL SERGING

- Adjust differential feed to prevent puckering
- Check the presser foot pressure if fabric is scarring from feed dogs
- Test the stitch width to adjust the amount of thread to show on the fabric

Serging inside corner: serger and spread the fabric open when you get to the inside corner.

Serging Outside Corners: serge to corner, lift the needle, turn the fabric, and serge down other side.

Be careful to maneuver the fabric away from the knife so you don't accidentally cut off the corners!

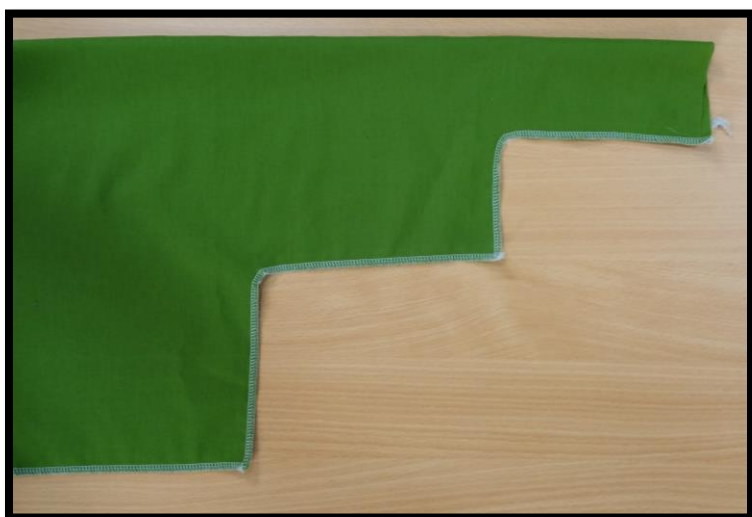
Join my Facebook group [Angela Wolf Patterns](#) to follow with sewing and serging garments.

Cheers,

Angela

Use coupon code **ITSEWEASY10** for 10% off everything at www.AngelaWolfPatterns.com

Refer to my [blog](#) for more serging tip and tricks!



Join me ...

