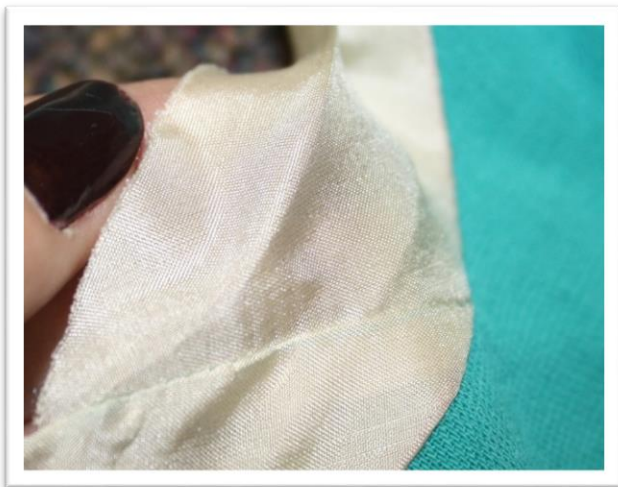
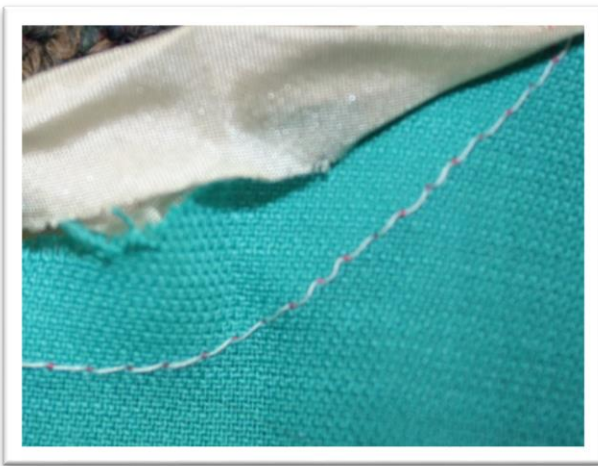


Season 600 - The Little Black Dress

- Bias Tape Trim on Neckline

Fabric: All the fabrics I use on **It's Sew Easy TV** come from [Vogue Fabrics](#)
Patterns and Sewing Supplies: [The Angela Wolf Pattern Collection](#)



Adding bias tape to the neckline and armholes is another way to change the look of the dress.

- Start by cutting bias strips of fabric. Cut the strips 2" wide and the length of the neckline and armholes.
- With right sides together, sew one side of the bias tape to the neckline.
- Press.
- Wrap the bias tape around the seam allowance.
- Press.



- Topstitch along the edge of the bias tape.



Refer to my [blog](#) for more sewing tip and tricks!

Cheers.

Angela



[Tailor's Clapper](#)

Use coupon code **ITSEWEASY10** for 10% off everything at www.AngelaWolfPatterns.com

Join me ...

