

Season 600 - The Little Black Dress

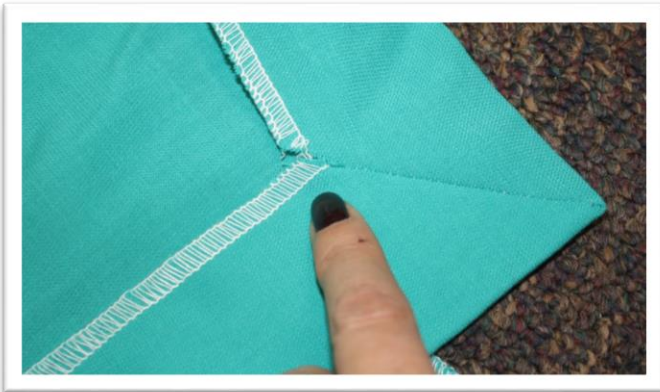
- Hemming the Vent

Fabric: All the fabrics I use on **It's Sew Easy TV** come from [Vogue Fabrics](#)
Patterns and Sewing Supplies: [The Angela Wolf Pattern Collection](#)



It's very easy to sew a vent in a hemline, start by:

- Attach a fusible interfacing to each side of the vent (as shown to the left)
- Press up the hem and make sure the hemlines align.
- Fold back the vent and press – you are left with the under flap (which lays flat) and the inside flap (which is pressed back)
- Under flap:
 - flip the fabric back along the hemline
 - with right sides together, stitch the edge of the hemline
 - turn fabric to the right side of the garment and press.

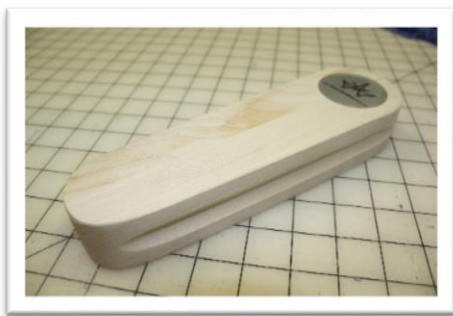


- Inside flap:
 - Sew a metered edge for a professional finish.
 - Fold the fabric with right side together and stitch on an angle from the hemline to the edge of the vent.
 - Turn the corner right side out.
 - Press.

Refer to my [blog](#) for more sewing tip and tricks!

Cheers,

Angela



[Tailor's Clapper](#)

Use coupon code **ITSEWEASY10** for 10% off everything at www.AngelaWolfPatterns.com

Join me ... 