

Episode 904

- Batwing Sleeves

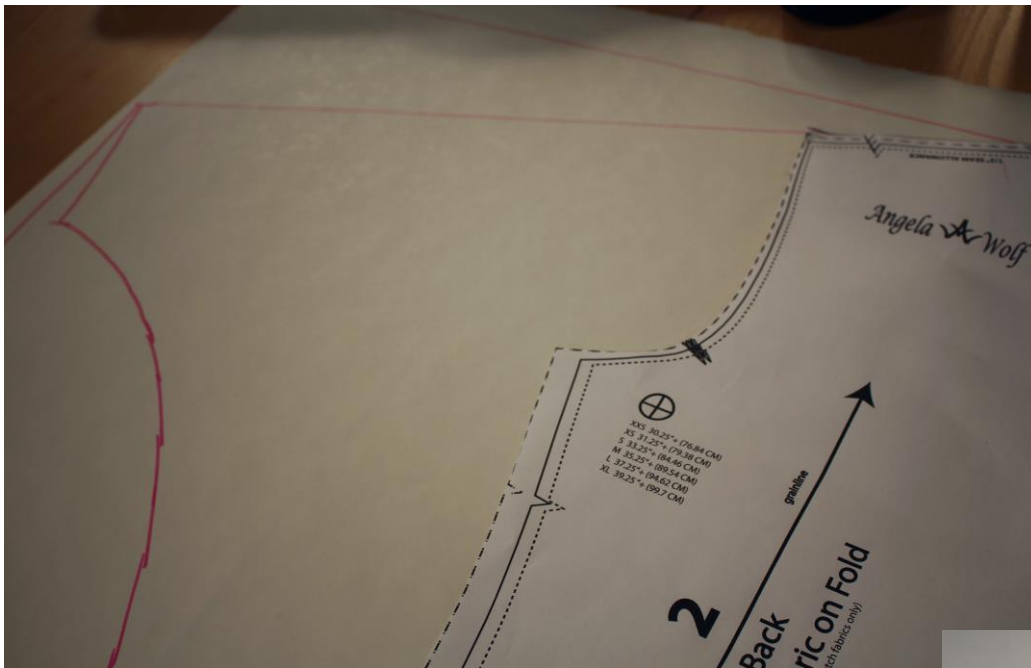
Fabric: All the fabrics I use on **It's Sew Easy TV** come from [Vogue Fabrics](#)
Patterns and Sewing Supplies: [The Angela Wolf Pattern Collection](#)



This is such a simple top to sew! You can either alter my [Ruched-T pattern](#) or start with the actual pattern "[Delila](#)" from the Angela Wolf Pattern Collection. The pattern alterations are similar to the Kimono duster from season 800. You can extend the shoulder seam along the original shoulder line or get rid of the shoulder seam all together by drawing a line starting at the neckline, perpendicular to the grainline (as shown to the right).

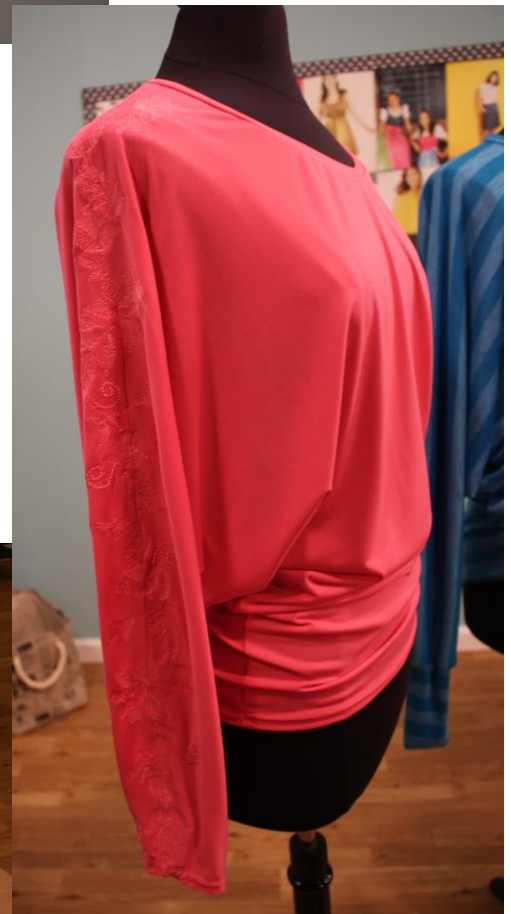
If you are not into altering patterns, not worries! Start with the Delila pattern and add embellishment to the outer sleeve seam.

Join me ...       



The peach top to the right has embroidery with the same color. I just wanted to add a little hint of surprise 😊

To do this, follow the instructions to the pattern and after the first step of sewing the shoulder seam – add the embellishment before sewing the rest of the garment. See below how I have the sleeve lined up on the machine.



Join me ...       



Use coupon code **ITSSEWEASY10** for 10% off everything at
www.AngelaWolfPatterns.com

Refer to my [blog](#) for more sewing tip and tricks!

Join me ...       