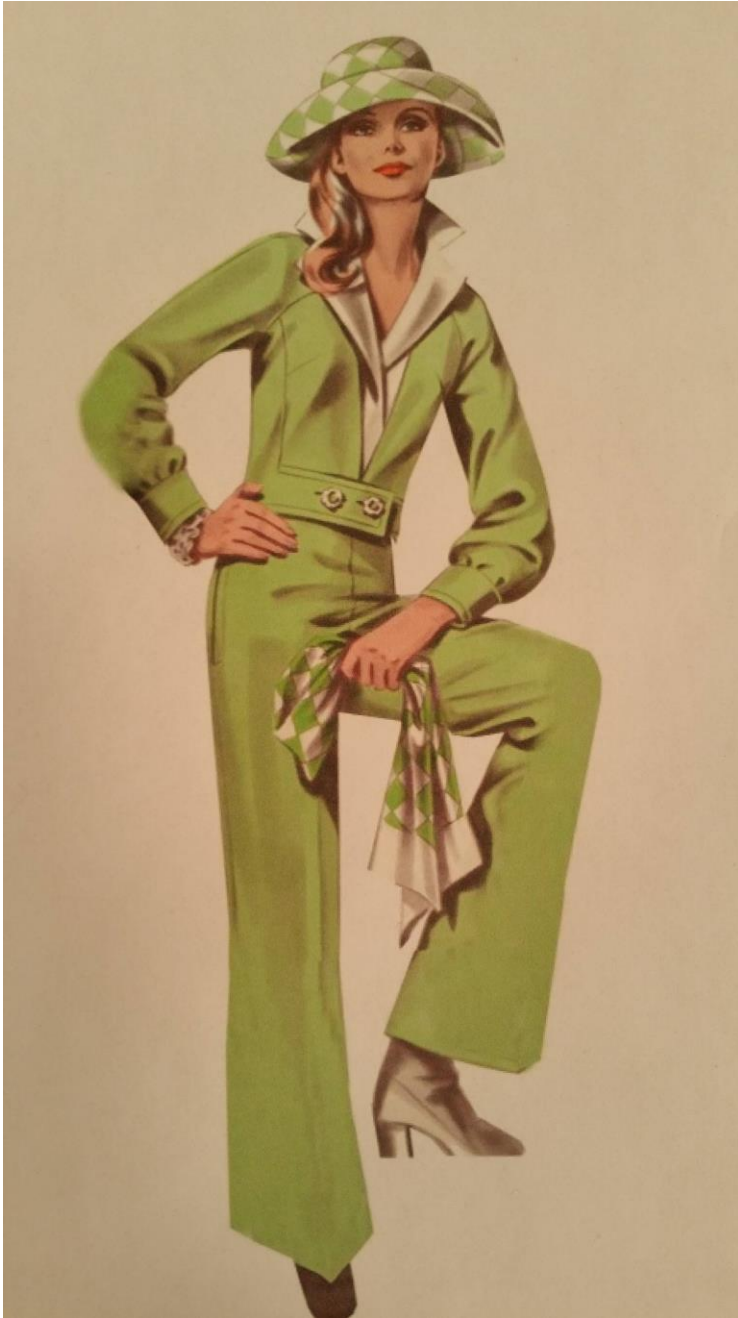


Episode 910

• Jumpsuit

Fabric: All the fabrics I use on **It's Sew Easy TV** come from [Vogue Fabrics](#)

Patterns and Sewing Supplies: [The Angela Wolf Pattern Collection](#)



A very popular style in the past and today!

Can't find the perfect pantsuit pattern, no problem 😊 simply combine two patterns in your stash, one for pants and one for a pullover top. There are a few pattern alterations needed:

Pants pattern –

- Alter the waist to be the same width as the hip
- Change the waist to elastic instead of a full waistband – so add a seam allowance at the waistband area for the elastic.

Top –

- Make sure the top had a large enough neck opening to get the pantsuit on and off.
- Attach the top to the pants, then add elastic at the waistline



Use coupon code **ITSSEWEASY10** for 10% off everything at
www.AngelaWolfPatterns.com

Refer to my [blog](#) for more sewing tip and tricks!

Join me ...       