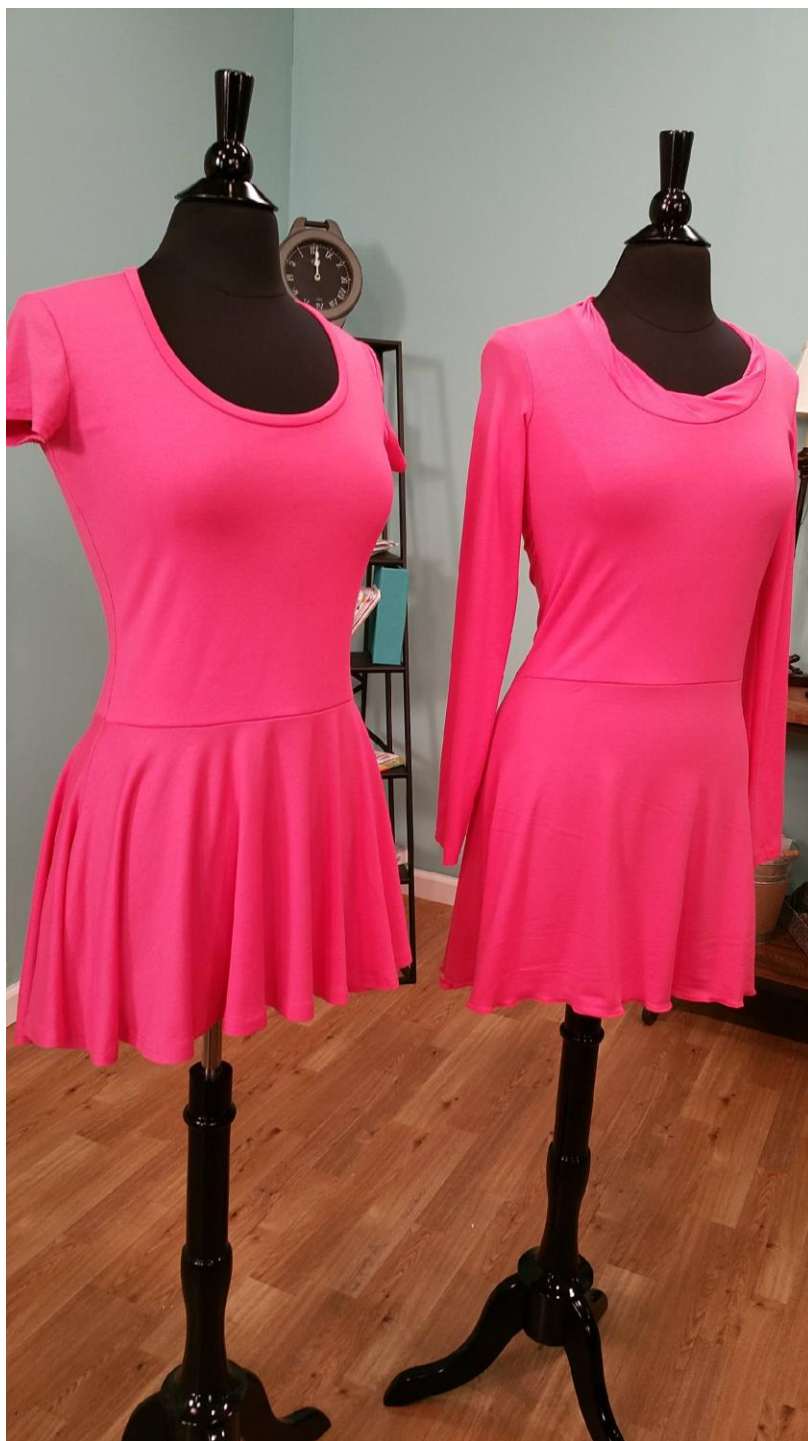


Episode 911

- **Pattern Hack for a Peplum on a Tee**

Fabric: All the fabrics I use on **It's Sew Easy TV** come from [Vogue Fabrics](#)
Patterns and Sewing Supplies: [The Angela Wolf Pattern Collection](#)



Once you have a great fitting pattern, it's fun and easy to do a little pattern hacking and add a new style.

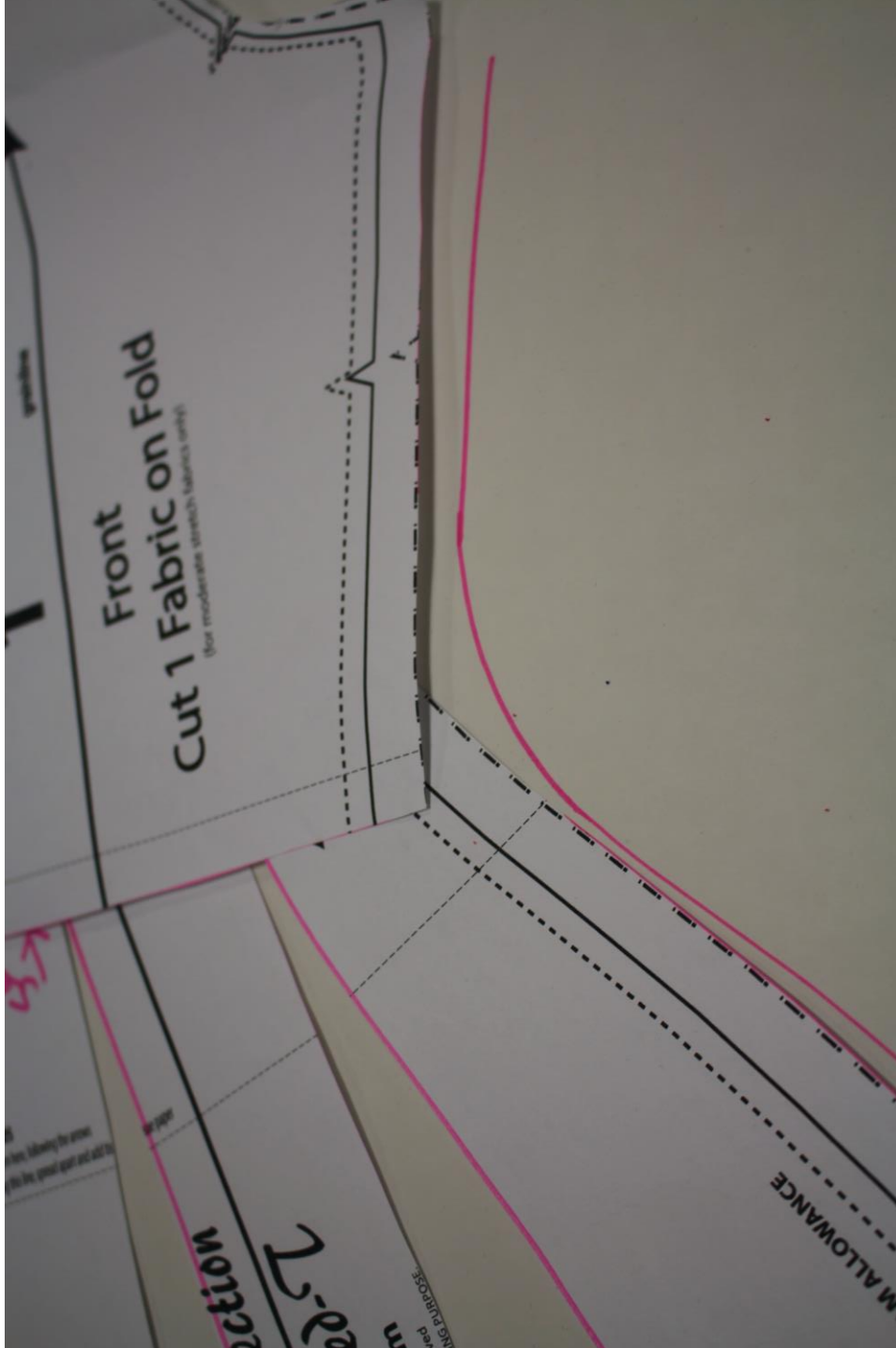
Adding a peplum is simple way to add a little flare or change the top into a dress.

All of these pattern alterations started with my [Ruched-T Pattern](#) (available in size XXS – 5X) and sewn with knit fabrics.

Use coupon code **ITSEWEASY10** for 10% off everything at www.AngelaWolfPatterns.com

Refer to my [blog](#) for more sewing tip and tricks!

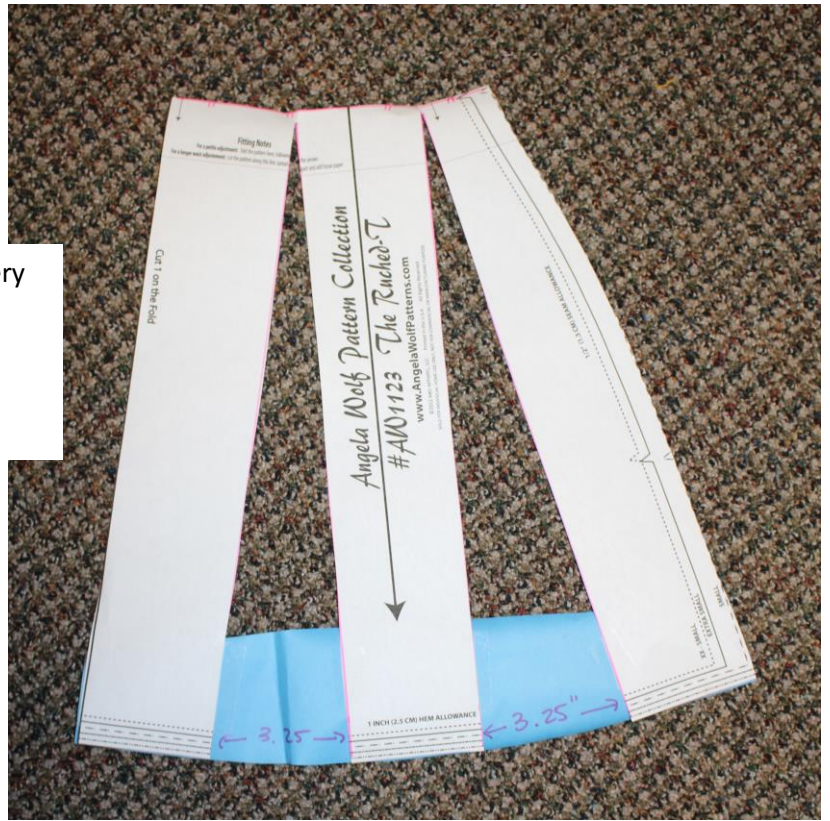
Join me ...       



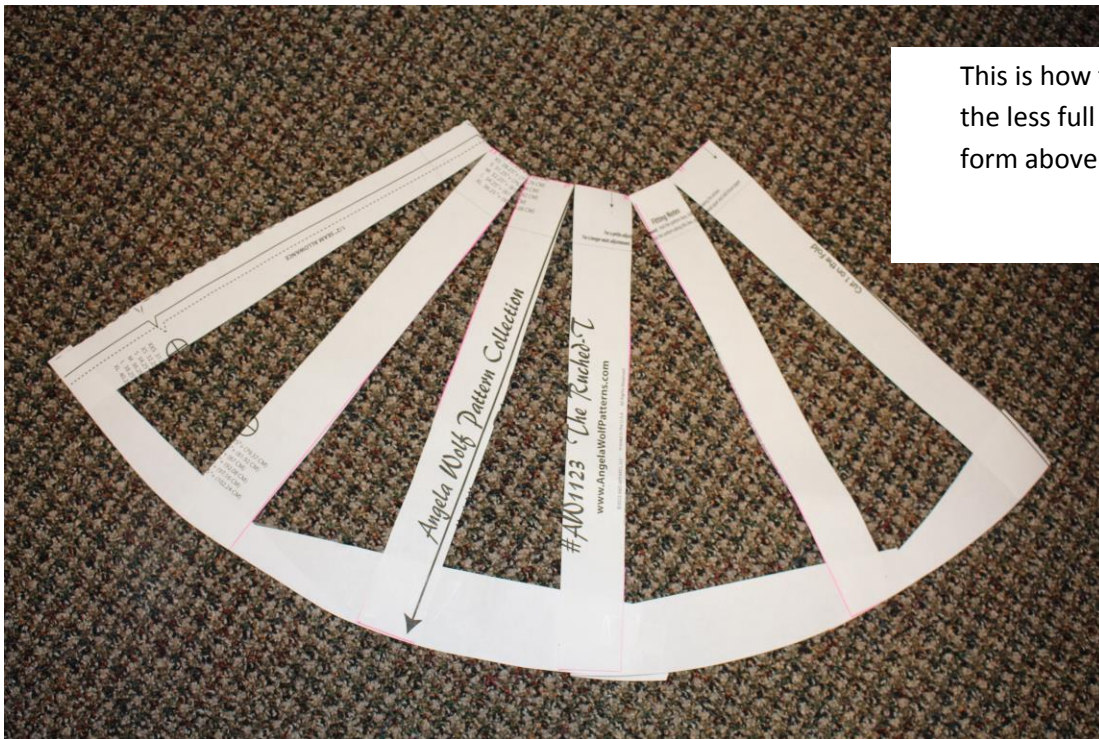
1. Cut the pattern apart at the waistline.
2. Leave the top alone and alter the bottom half.
3. After altering the bottom half, reattach and treat as one pattern piece.

Join me ... 

This is how the pattern ended up for the very full top on the left dress form above.

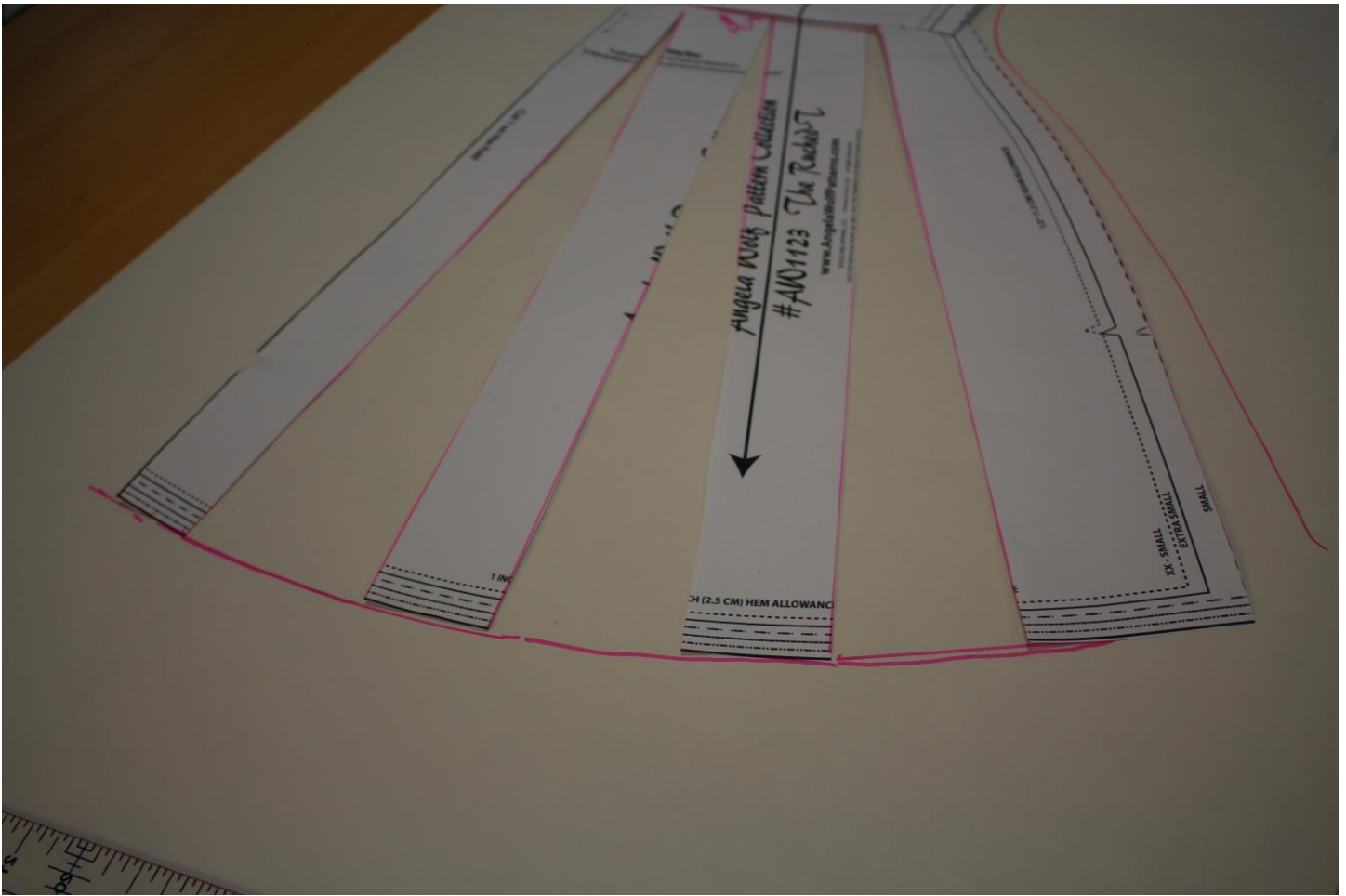


This is how the pattern ended up for the less full top on the right dress form above.



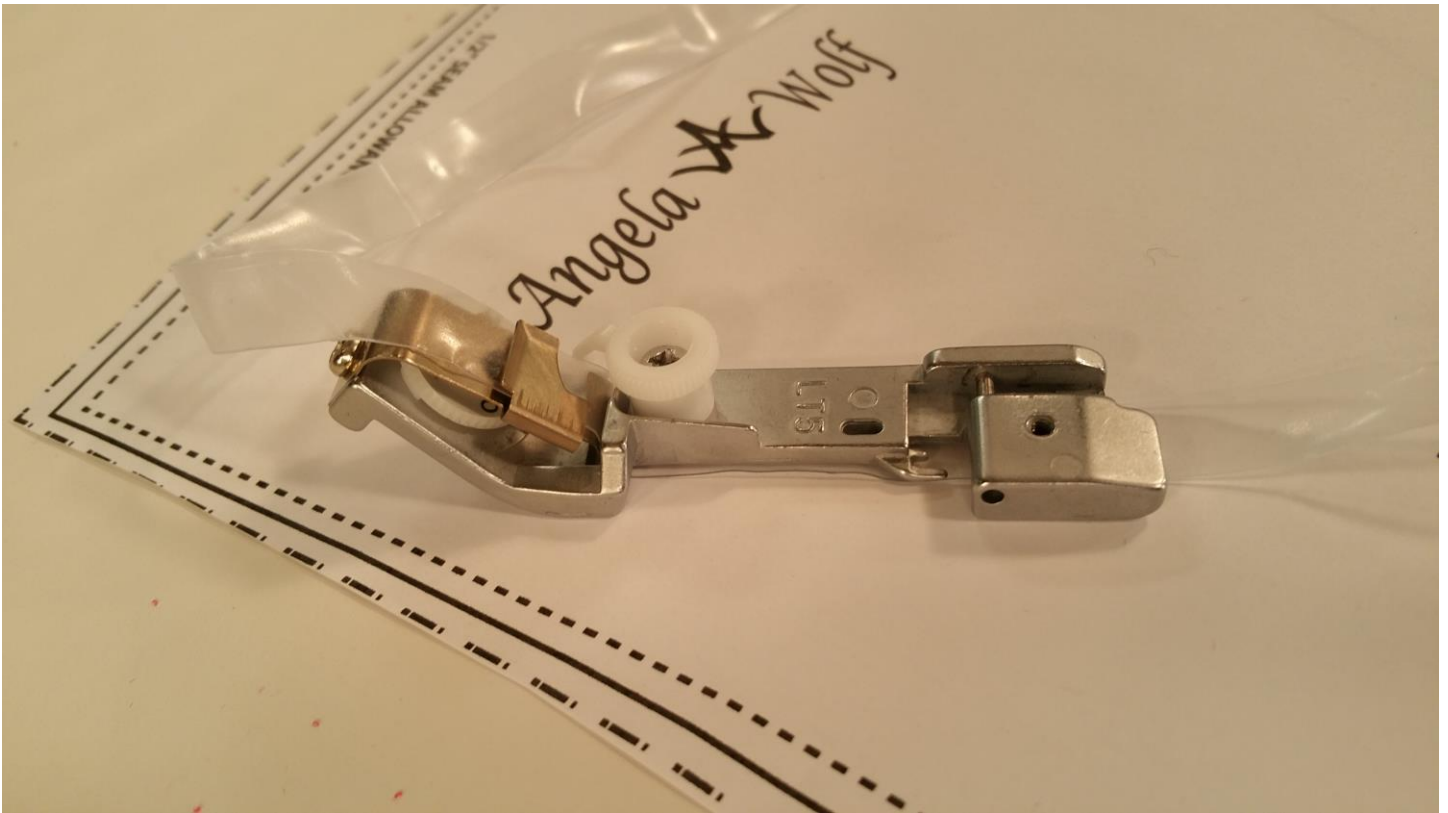
Join me ...





Create the peplum but slashing and spreading the pattern. Use the slashed pieces to draw a new hemline. If you want to change the top into a dress, lengthen the pattern before slashing and spreading.

Join me ... 



Tip for sewing and serging knits:

Use clear elastic in the shoulder seam for stability, this way the shoulders won't stretch out over time ☺

Be sure to share the photo of your pattern hack!



Join me ...  