

It's Sew Easy Series 2100 – It really is SO Easy!

Show#2105-1 Scrap Happy Patchwork Placemat – Serger Style!

Presented by: Joanne Banko
www.letsdosew.com

Let's stay in touch! I'd love to help you make the most of **your** sewing machine!

[CLICK HERE](#) to add your name to the letsdosew.com email list and receive timely tips, sewing news, free tutorials, and special updates. You'll be the first to know about new blog posts and detailed previews of the online It's Sew Easy TV show.



Notes about the project: Finished placemat measures approximately 17" wide X 13" long. Supplies listed are for one placemat. For this project you'll need 2 ½-inch wide fabric strips for a log cabin style patchwork placemat. I used leftovers from a quilter's jelly roll. As an alternative you can cut strips from fabric yardage.

Traditionally, log cabin blocks feature light-colored strips on one side of the block and dark colored strips on the opposite side. This gives you many options for block layouts on a quilt. However, this is just a one block placemat and a scrap happy one at that! I simply used pieces that I liked. Feel free to create your placemat in a more uniform manner if desired. **Tip:** I found it helpful to label each cut piece to keep my stitching order in line.

The serger makes quick work of stitching the seams and overcasting them at the same time, with the added advantage of the serger seam finishing close to a ¼-inch, a popular seam allowance for quilting. Note that ¼-inch seams are not as precise when sewn with the serger.

If you want the ultimate in accuracy, feel free to sew the seams on your sewing machine. For yet another option, you could choose to cut strips slightly oversized in length, trimming each one after stitching. Have a rotary cutter, ruler, and mat on hand for this project.

I should tell you up front I am not a traditional quilter. More of a “contrarian” quilter, I like to find quick ways to quilt and I’m not afraid to bend or break a few rules. When creating this project I opted for the speed and durability the serger provides. Accuracy is not so important for a single block placemat. I serged each seam by barely skimming the raw edge of the fabric to avoid altering the size of the piece. If need be, you can ease or slightly stretch pieces to fit. If you end up with extra length at the end of your seam, simply trim and move on to the next piece. Pressing each piece as you go will result in a more neatly finished project. You could also finger press or press with a rolling tool or wooden iron as you stitch.

Using a fusible fleece meant that quilting the layers was left as an option, not a necessity. In the end, I opted to add some straight stitch quilting around the strips to give it a more quilted look and keep the placemat flat through multiple launderings. I hope you have as much fun creating these placemats as I did!

Machines and supplies featured or recommended in this show:

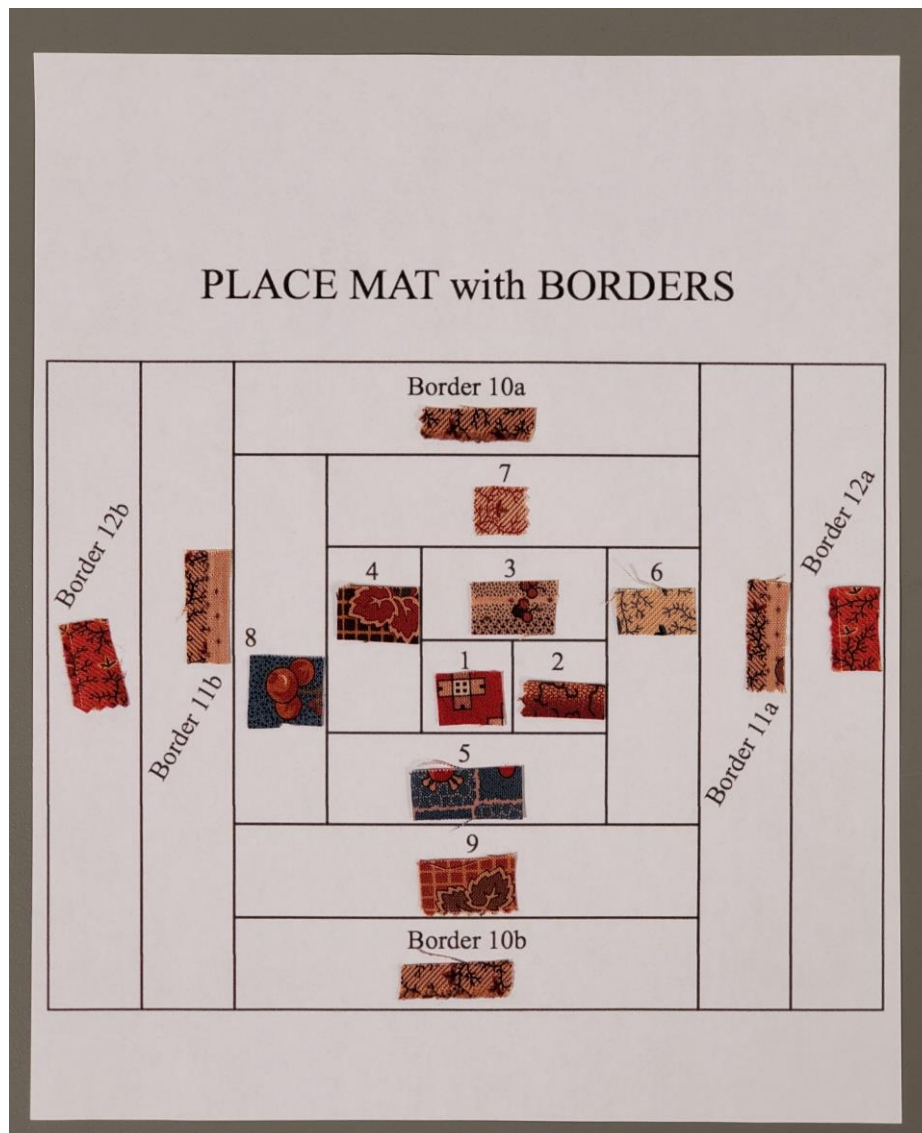
- [Brother](#) Pacesetter PS5234 Serger, threaded with four cones of thread.
- [Brother](#) Stellaire combination sewing and embroidery machine.
- PDF template to organize fabric strips for serging strips in order. Download and print ISE2105-2_Joanne Banko Placemat.pdf to use as your reference sheet. This page serves as a map, keeping you on track.
- Fusible web for closing opening.
- [Pellon 987F](#) fusible fleece for padding placemat.
- Fabric for backing. Choose a coordinating print or a solid fabric for backing placemat. Note that fleece and backing are cut after patchwork is completed.
- Assemble the following pieces in any order or color combination you choose:
 - Piece (1) Start with a center block – 2 ½-inches square
 - Piece (2) A second 2 ½-inch square block
 - Piece (3) Strip 2 ½-inches X 4 ½-inches
 - Piece (4) Strip 2 ½-inches X 4 ½-inches
 - Piece (5) Strip 2 ½-inches X 4 ½-inches
 - Piece (6) Strip 2 ½-inches X 6 ½-inches
 - Piece (7) Strip 2 ½-inches X 8 ½-inches
 - Piece (8) Strip 2 ½-inches X 8 ½-inches
 - Piece (9) Strip 2 ½-inches X 10 ½-inches
 - Border (10a) Strip 2 ½-inches X 10 ½-inches
 - Border (10b) Strip 2 ½-inches X 10 ½-inches
 - Border (11a) Strip 2 ½-inches X 14 ½-inches
 - Border (11b) Strip 2 ½-inches X 14 ½-inches
 - Border (12a) Strip 2 ½-inches X 14 ½-inches
 - Border (12b) Strip 2 ½-inches X 14 ½-inches

Creating log cabin patchwork placemat with the serger:

Step 1. Set up serger for a four-thread balanced stitch with thread that blends with fabrics. **Tip:** Medium grey thread blends with many fabrics and is a tried a true thread trick used by traditional quilters. Practice your stitch on scraps before starting.

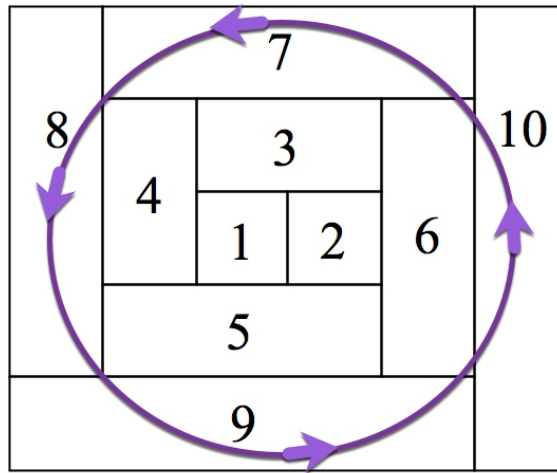
Step 2. To stay on track and make sure to follow the right order for stitching, cut snips of fabric and paste them to reference sheet. See **Figure #1.**

Fig.1



Step 3. Begin by piecing squares 1 and 2. Continue to add strips working in a counterclockwise manner and following the order on the reference sheet. See **Figure #2.**

Fig.2

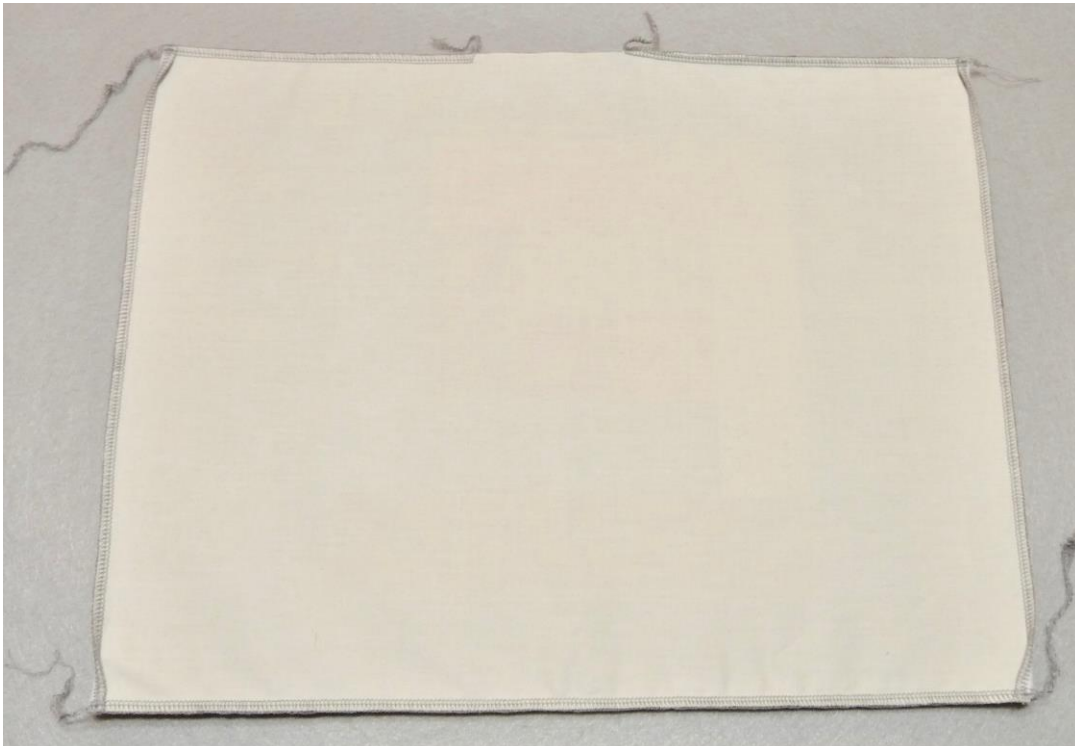


Next, add top and bottom borders, then side borders. Note that borders can be a mix of fabrics. Use whatever you like! Give patchwork a good press and trim piece if necessary to even it up.

Step 4. Use your finished piece to cut a matching piece of fusible fleece and a matching piece of lining. Next, trim off 1/8-inch off one long and one short side of lining piece. Fuse fleece to entire wrong side of patchwork. **Tip:** Pressing with steam and pressure will achieve a good bond between fabric and fleece. This also flattens fleece a little, making it ideal for placemats.

Step 5. Place backing and patchwork right sides together. Serge short edges, then long edges, turning in the corners and leaving an opening on one side for turning. See **Figure #3**.

Fig.3



Turn right side out and press, carefully pressing open edges inside so they're even at the edge. See **Figure #4**.

Fig.4

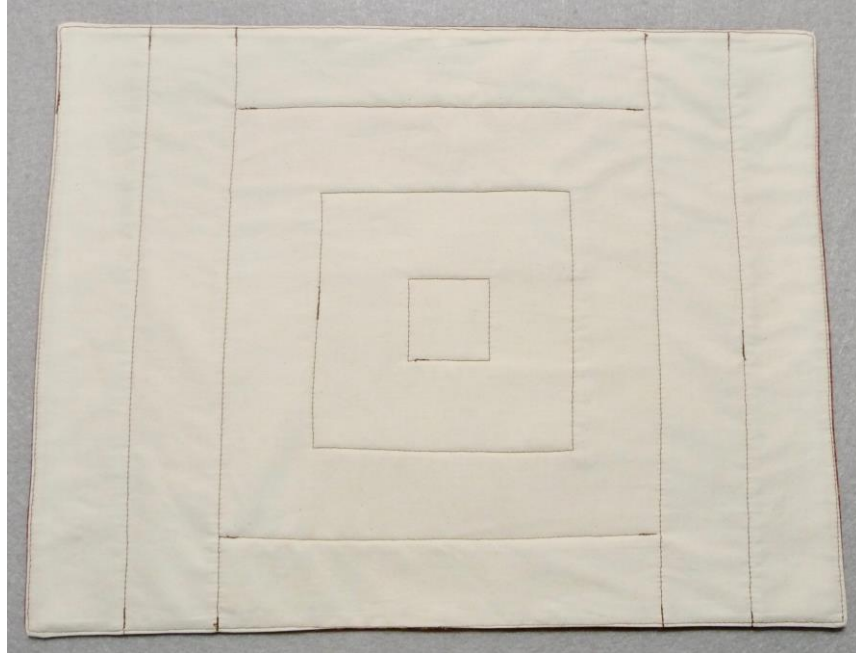


Use fusible web to close opening. Option: Topstitch outer edge, closing opening in the process. See **Figure #5**.

Fig.5



Quilt finished placemat if you like. In the end, I chose to do simple stitching close to the seams. See example of quilting on back side of finished placemat below:



You are finished! Enjoy!



Additional Resources:

- For more projects and tutorials, be sure to visit www.letsdosew.com. You'll find online lessons, videos, free downloads, plus lots of sewing and embroidery information and inspiration!
- [CLICK HERE](#) to sign-up for sewing news from letsdosew.com.
- [Subscribe to my YouTube channel](#) for Let's Go Sew videos.
- You can find me on Facebook [HERE](#).

Happy Sewing!

Joanne